

HUNTSVILLE SURVEY

BLOCK 2 PLAT B

TAXING UNIT: 35, 318

SCALE 1" = 200'

SEE PAGE 20

**FIRST ST.

(A) STATE ROAD COMMISSION OF UTAH 240190019 TU 35

(B) SHARON WANGSGARD TR ETAL 240190027 727 SQ FT TU 35

(C) STATE OF UTAH ROAD COMMISSION 240190021 TU 318

(D) STATE ROAD COMMISSION OF UTAH 240190003 TU 318

(E) STATE OF UTAH ROAD COMMISSION 240190020 TU 318

SEE PAGE 13

PLAT A SEE PAGE 10

(H) STEPHEN MERRILL HADLEY & SHIRLEY MARIE HADLEY CO-TRUSTEES 240190007 10,505 SQ FT TU 318

(I) STATE OF UTAH 240190008 TU 318

(J) STATE OF UTAH 240190010 TU 318

(K) GILBERT A WANGSGARD & WF TRUDI 240190009 4005 SQ FT TU 318

(L) STATE ROAD COMMISSION OF UTAH 240190006 1.28 AC± TU 318

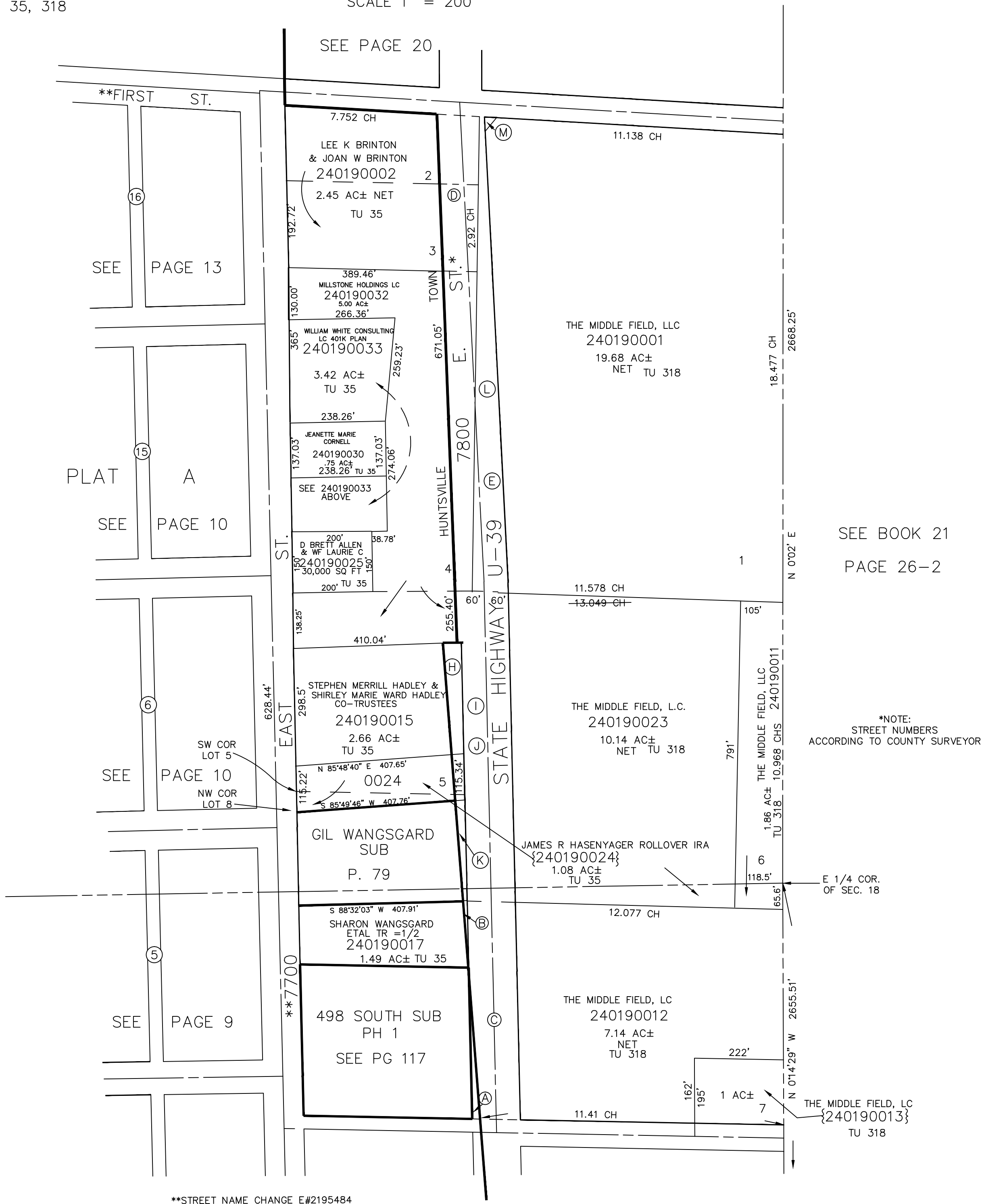
(M) UTAH DEPARTMENT OF TRANSPORTATION 240190029 533 SQ FT TU 318

SEE PAGE 10

SEE PAGE 9

**STREET NAME CHANGE E#2195484

SEE PAGE 18



SEE BOOK 21 PAGE 26-2

*NOTE: STREET NUMBERS ACCORDING TO COUNTY SURVEYOR

E 1/4 COR. OF SEC. 18

THE MIDDLE FIELD, LC {240190013} TU 318